

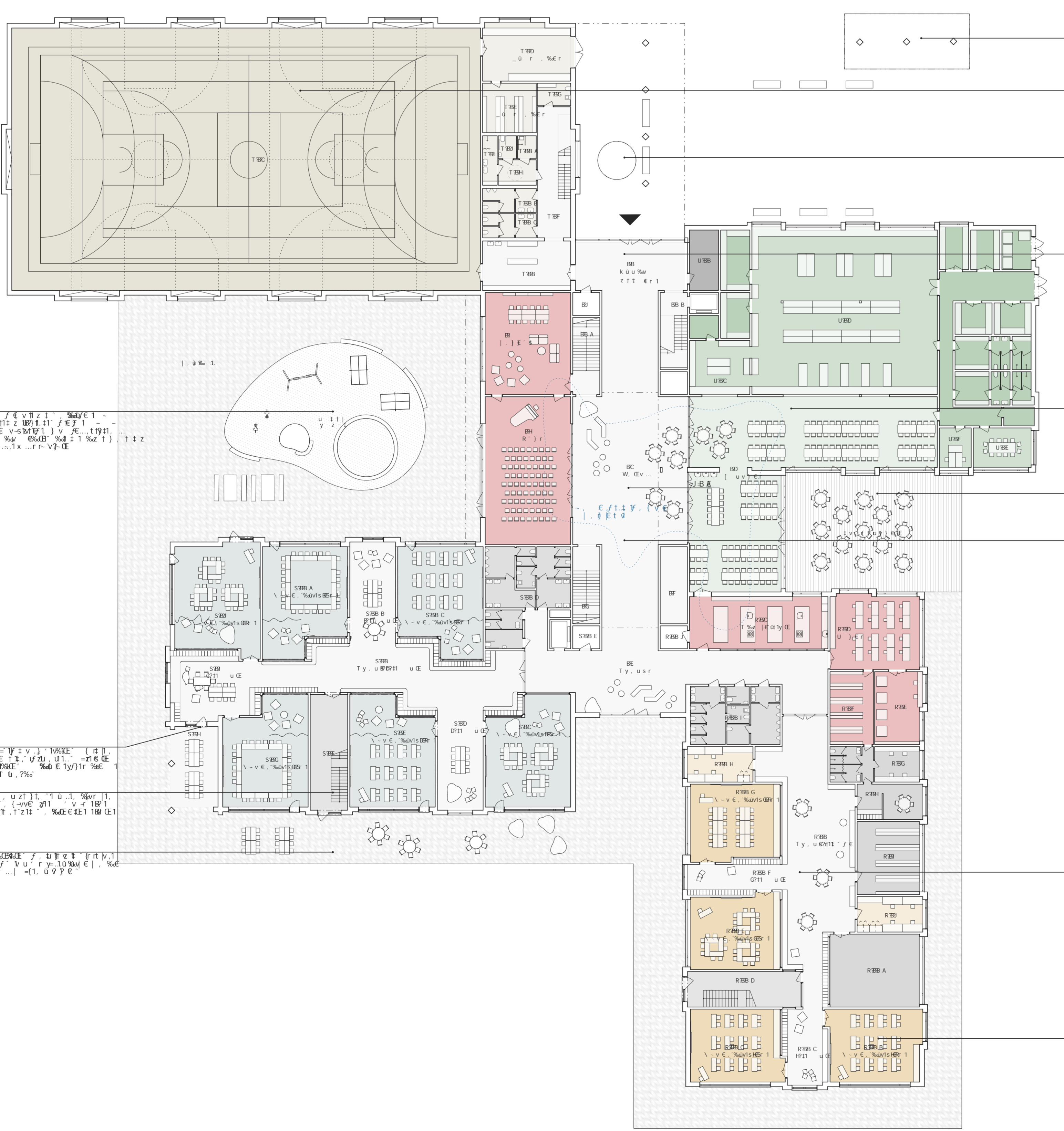
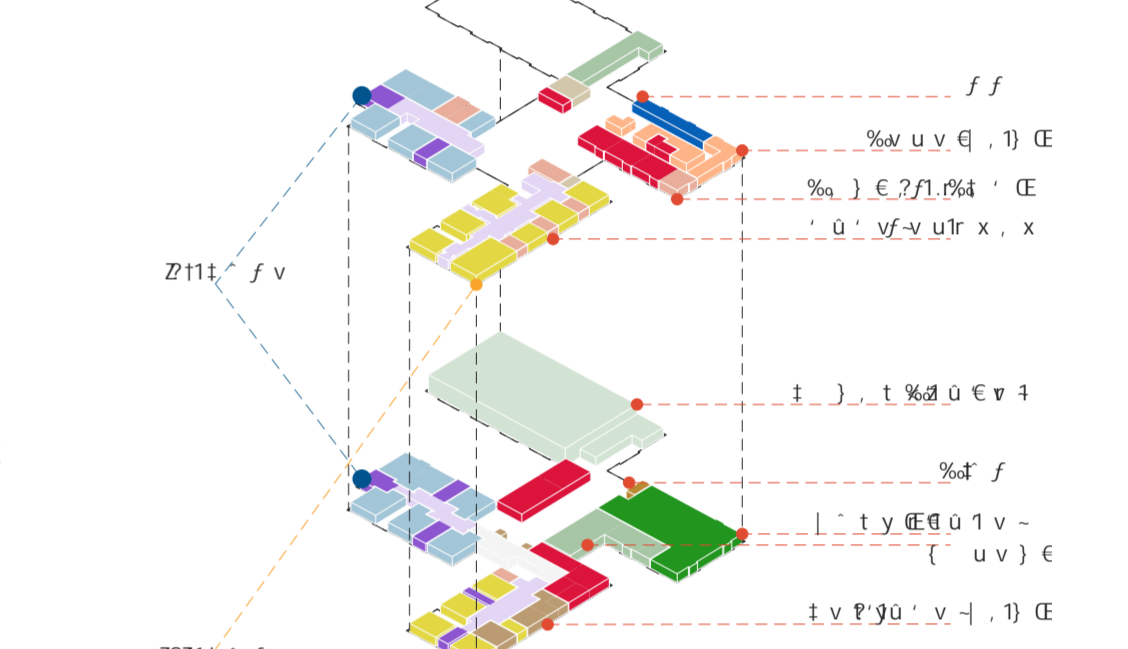


- CB Ty. usf BHHI
- CC dty. uz 1 CDE
- CD Ty. usf BDA
- CE Ty. usf GHE
- CF dty. uz 1 BFC
- CG dty. uz 1 BCE
- CH Rgtl r CEC
- CI k'u v'k'ot FDE
- E DHH

- SCB Ty. u RPH1 uE BHHI
- SCC \-v-e. %avsisR1 HFC
- SCD d f. \ v f. e. HPH1. EU EDE
- SCE \-v-e. %avsisR1 HFC
- SCF 0E2 | | %avsisR1 DJC
- SCG \-v-e. %avsisR1 HFE
- SCH V f. v. u. %avsisR1 GAG
- SCI V f. v. e. HPH1. EU HFC
- SCJ \-v-e. %avsisR1 HFC
- SCBA d s. ... %avsisR1 DJC
- SCBB k'u v' z h i v e DJC
- SCBD f v s r e r t i y e DJE
- SCBE h t i o t z FUA

- TCC Ty. usf GEI
- TCD r e e GFA
- TCE d f. i y e EDE
- TCE V r s z e g t i DHC

- UCB Ty. usf | f. y. r b v e f | r y. % z 1 FHI
- UCD [v u e r t i e. t i GBJ
- UCE V r z e g t i % a v s i s R 1 BHC
- UCF \-v-i. g'z y % v e b v t y. % e. n u t v CAGI
- UCG j. x. f v u BHC
- UCH Ty. u % a v s i s R 1 GAGI
- UCI [v v i r z u i BHC
- UCJ [v u e r t i e. t i GAGI
- UCBA v u z i v e r BHC
- UCBB 0 e 2 | | % a v s i s R 1 BHC
- UCBC v j. e. - z a q | v e BFC
- UCBD V r s z e v i EACI
- UCBE R e t y % BAF
- UCBF \-v i y e r t i y e BFC
- UCBG d | j r u BFC
- UCBH Ty. u s f o t z z' % e e t y i IAE
- UCBI g' z y % a v s i s R 1 GAGI
- UCBJ y u v s e r GAGI
- UCBA d i o g 1 GAGI
- UCBB d | j k u v % e. e y i % e BHC
- UCBC d j l y u v s e r GAGI
- UCBD h t i o t z BHC
- UCBE S v' s r... h t... % 1 EFA
- UCBF h t i r - t i e r e t z BFC
- UCBG d f. i y e FUA
- UCBH | j z u IAI
- G J E - I DJEFC



- BB k'u v'k'ot FAD
- BC W. dev... CDE
- BD [u v] e r CDE
- BE Ty. usf BFAD
- BF dty. uz 1 BFC
- BG dty. uz 1 BCE
- BH R | j r BDE
- BI | j e s IAD
- BJ h t l . u z v FHE
- BB A d t y . u z 1 BFC
- BB B d t y . u z 1 BGA
- BA B A D - I

- SBB Ty. u RPH1 uE BHHI
- SBC \-v-e. %avsisR1 HFC
- SBD d f. \ v f. e. HPH1. EU EFC
- SBE \-v-e. %avsisR1 IAC
- SBF dty. uz 1 EAC
- SBG \-v-e. %avsisR1 IAC
- SBH V f v u z DGI
- SBI d f. \ v f. e. HPH1. EU EFC
- SBJ \-v-e. %avsisR1 IAC
- SBB A \-v-e. %avsisR1 HGI
- SBB B d f. \ v f. e. HPH1. EU HGI
- SBB C \-v-e. %avsisR1 HGI
- SBB D h t i o t z GBJ
- SBB E d i ... (% r FHI
- J D B H - I

- TBB Ty. usf EFA
- TBC e) . t % e r BDA
- TBD _ o r . % e r EHE
- TBE _ o r . % e r ECE
- TBF Ty. usf EAC
- TBG 0 | j z u GFA
- TBH k'u v'k'ot IAE
- TBI d f. i y e GAC
- TBJ S v' s r... h t... % 1 DJC
- TBB A h t i r - z BFC
- TBB C h t i v e e BFC
- B D E - G - I

- UBB g' o i e t v BDE
- UBC | j k u v i GAC
- UBD \ i y e FDE
- UBE U v e e | i e e GBJ
- UBF V r e t i u v s e r EAC
- G B A G - I
- E H I - G - I

